

GRAND PRIX 2



Tutorial:

Getting started in editing Cars with Paint and other Picture-editing Programs and convert them in the Game

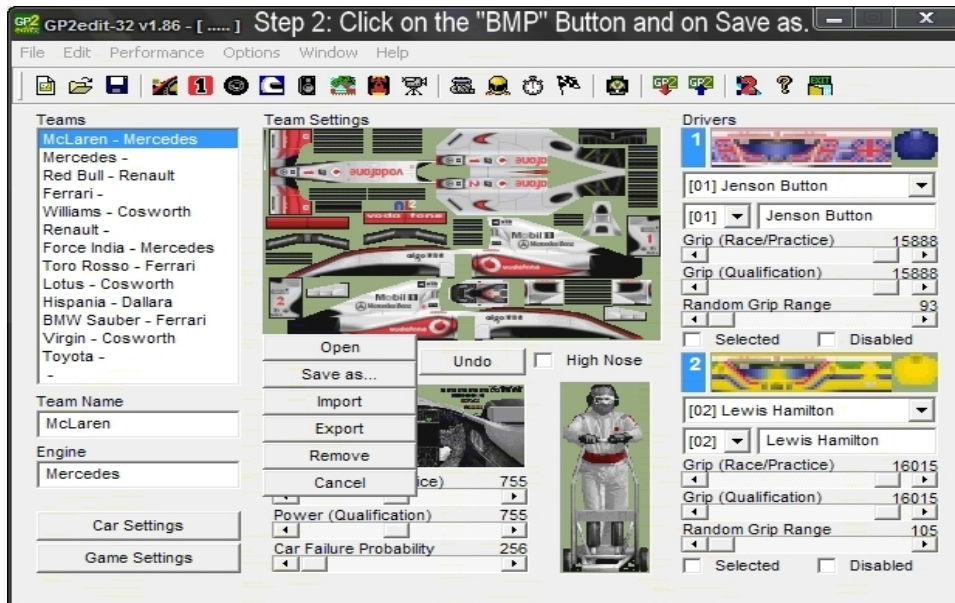
In this Tutorial you will learn how to edit Car Bitmaps with Programs like Paint. To understand the steps and the descriptions are Pictures included.

Let's start with Step 1:

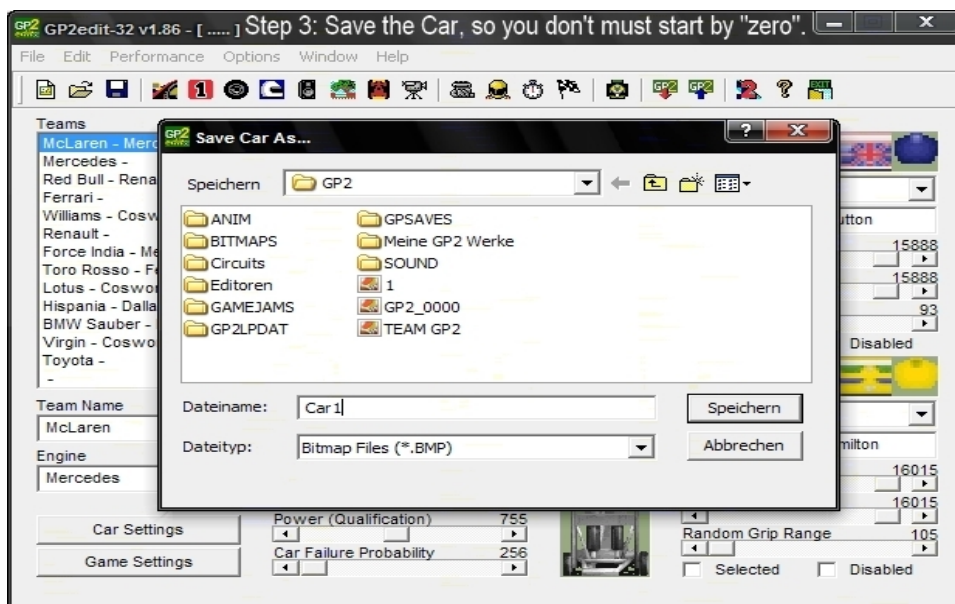


First of all you must download and open "GP2edit", the main editor for Grand Prix 2. After you open it for the first time you must set where your Grand Prix 2 dictionary is (e.g. C:\Games\GP2). Then a screen will appear (Picture above this text).

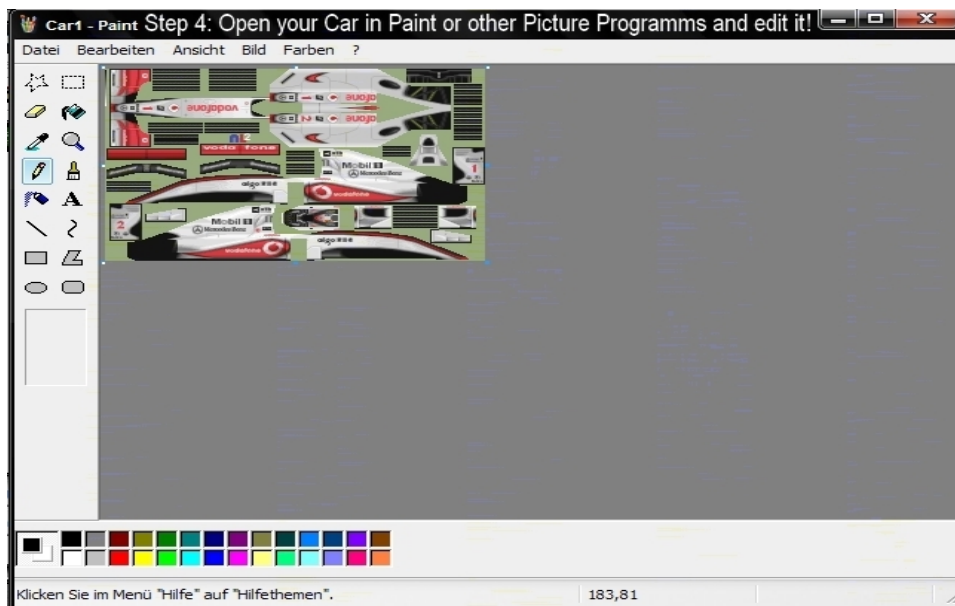
Click on “Car Bitmap...” and then on “Save as..” (Picture under this text.).



Then a new screen will appear and you must save the Car BMP (Picture above this text).



The Car BMP will be saved in the folder you saved and you can close “GP2edit” or leave it. Now comes the hardest Part of all: draw the car! Note that you need much time to make a good car for “Pixel by Pixel”!

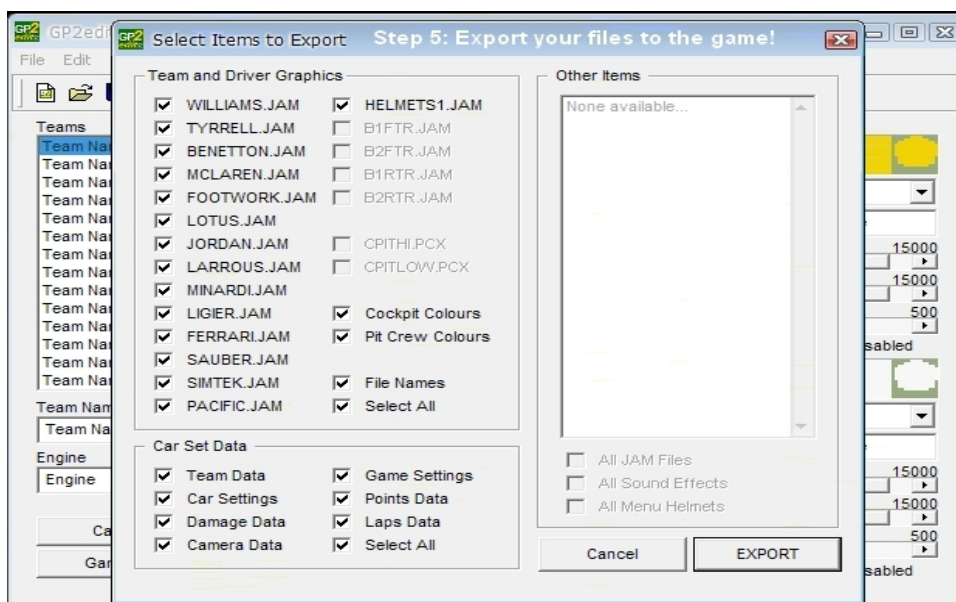


Now you are at Step 4! Open Paint or another Picture-edit Program (the choice is yours). Now load the picture of the car: Click on “Files” then on “Open” and then go to the folder there the Picture is and load it. After that you can edit the car.

TIP: For the beginning use the Grand Prix 2 Standard Car for edit! It's easier!

When you think that it's enough for now you can save your Car and go back to “GP2edit”. Click on “Car Bitmap...” and then on “Open” and open your edited Car. After that the current car in the editor file will be replaced by yours. If you want to make a whole carset you can repeat the steps 2, 3 and 4 till you got all cars.

To bring your car\carset in the game click on the “GP2” Button, now this Screen will appear:



Now you must set the files you want to Export to the game, choose the files you did and then click on Export and your files will export to the game! Now close "GP2edit" open "DOSBox" and start your Grand Prix 2 and look if you're happy with your car, if not, you can change the look of it, the Power of the Car, the drivers etc.